

How to install your **Ultralift AquaLift** Swim Spa Cover Lifter



This is your step-by-step guide to installing the AquaLift Swim Spa Cover Lifter on to your swim spa. Begin by opening the box your cover lifter came in and check the contents against the installation guide to ensure you have all the components required.

PLEASE NOTE: That the assembly of your AquaLift Swim Spa Cover Lifter System will be done in two stages. The first stage is the assembly and installation of the AquaLift Stand Lower Assembly. The second stage is the assembly and installation of the AquaLift Lifer Upper Assembly on to the Stand Lower Assembly and swim spa. The parts list for both stages appears at the below starting on this page.

Before you begin make sure your swim spa is completely empty of water and have your Bi-fold Cover installed (set on top of the swim spa).

PLEASE NOTE: If you purchase a send set- the same parts list is representative of what should be present (provided) for the installation of the second set of AquaLift Swim Spa Cover Stands for the other end of your swim spa.

At this time we also ask you to review the Parts listed for Stage Two (appears after Step 4a in the instructions) for the assembly and installation of the AquaLift Swim Spa Cover Lifter Upper Assembly

COMPLETE PARTS LISTS:

STAGE ONE:

AquaLift Lower Stand Assembly Parts:

- 1 2x AquaLift Stand Base Plate (Floor Plates)
- 2 2x AquaLift Stand Base
- 3 2x AquaLift Stand Upright
- 4 2x AquaLift Stand Bracket

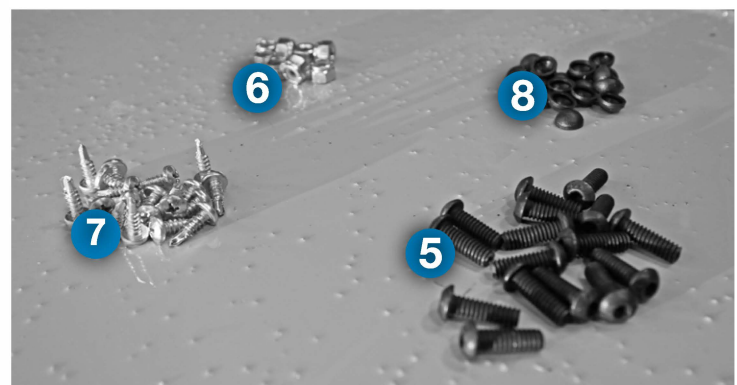
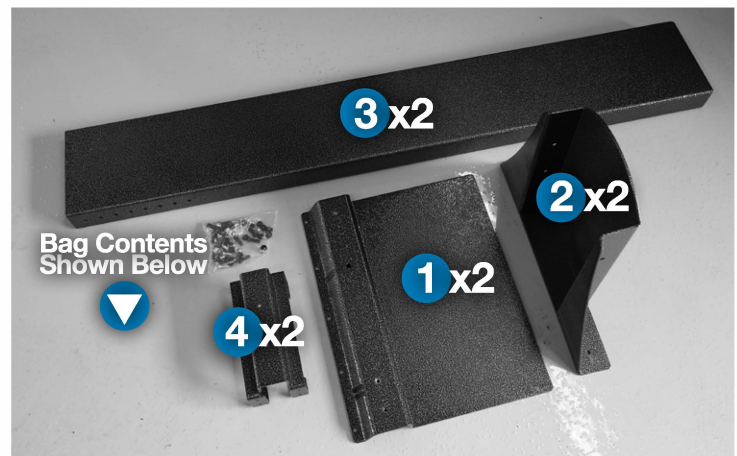
AquaLift Lower Stand Hardware Bag:

- 5 16x 1/4" / 3/4" Long Button Socket Cap Bolts (Black Zinc Plated JS 500 Coated)
- 6 8x 1/4" Nylon Insert Locknuts (JS 500 Coated)
- 7 20x 5/8" Pan Phillip Tek Self-Tapping Screws (JS 500)
- 8 20x Plastic Black Cover Caps

CAUTION
DO NOT USE
IN HIGH WINDS

To view the easy to follow Installation Video that pertains to this Cover Lifter, please go to:

www.ultrapoolandspa.com/videos



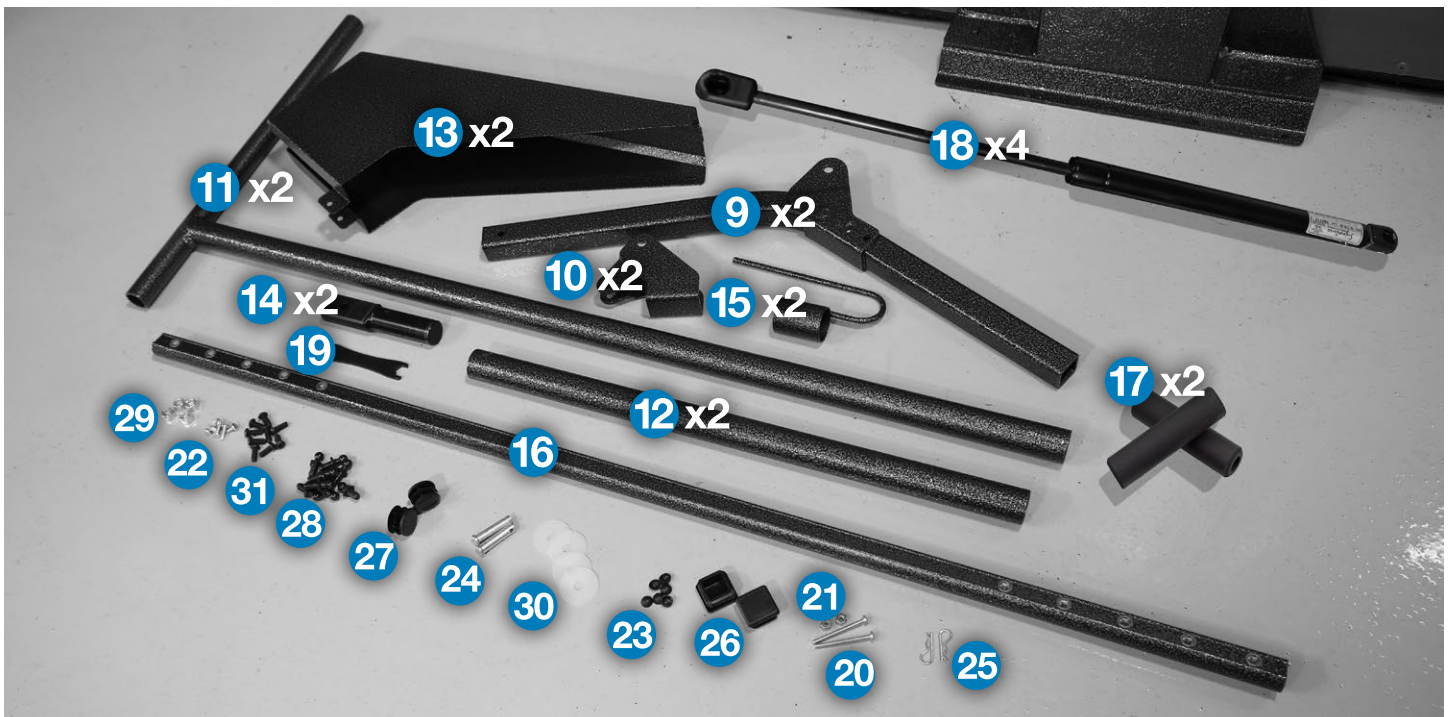
STAGE TWO:

AquaLift Upper (Lifter) Assembly Parts:

- 9 2x AquaLift Brackets
- 10 2x ORI Stoppers
- 11 2x Side Support Arms (Right & Left - One (1) of Each)
- 12 2x Pivot Arms (Round)
- 13 2x AquaLift Covers
- 14 2x Pivot Support Arms (Insert)
- 15 2x Cover Hooks
- 16 1x Centre Pole
- 17 2x Foam Grips
- 18 4x Hydraulic Gas Shocks
- 19 1x 1/2" Spanner

AquaLift Upper (Lifter) Hardware Bag:

- 20 2x Pan Quadrex Machine Screws (JS 500 Coated)
- 21 2x Nylon Insert Locknuts (JS 500 Coated)
- 22 6x 5/8" Long Zinc Pan Phillip Self Tapping Screws (JS 500 Coated)
- 23 6x Dome Black Caps
- 24 2x Hitch Pin (JS 500 Coated)
- 25 2x 1 1/2" Clevis Pin (JS 500 Coated)
- 26 2x 1 1/4" Large Square Black Plastic Caps
- 27 2x 1 1/8" Large Round Black Plastic Caps
- 28 8x 5/16 Ball Studs
- 29 4x 5/16 Nylon Insert Locknuts (Zinc)
- 30 4x 1 1/2" Nylon Washers
- 31 10x 5/8" Long Button Socket Cap Screws (Black Zinc Plated JS500 Coated)



TOOLS LIST:

- Tape Measure
- Cordless Power Screwdriver or Drill
- A number of Cross Slot or Phillips screwdriver bits.
- A number of Square Head or Robinson screwdriver bits.
- 7/16" Wrench and Socket
- Ratchet Wrench
- 5/16" Socket Bit
- 5/16" Open End Wrench
- Needle Nose Pliers
- Small Flat Head Screwdriver
- 5/32" Allen Key
- Open Angle Heavy Duty Pro Pry Bar

With your swim spa empty you are set to start the install of your new Swim Spa Cover Lifter.

Let's Begin the Assembly....

Stage One:

AquaLift Lower Stand Assembly Parts

Step One: Measurement for AquaLift Lower Stand Assembly Set-up

1a) Take the measuring tape and measure the distance from the ground, deck, or concrete pad up to the lip (edge) of the acrylic. Take a note of the measuring tape and ensure you measure twice.

Your Measurement is _____.

Step Two: Assembling AquaLift Lower Stand Assembly

2a) On a flat surface place the AquaLift Stand Base (Floor) Plate **1** right side up and place the AquaLift Stand Base **2** on the raised portion of the Base (Floor) Plate **1** so that the open side of the AquaLift Stand Base **2** faces the large flat portion of the AquaLift Stand Base (Floor) Plate **1** as shown in Image (2a). Line-up the holes so that you can secure the Stand Base (Floor) Plate **1** to the Stand Base **2** with four Button Socket Cap Screws **5**. You will need to repeat this step one more time so that you have two completed AquaLift Base assemblies comprising of parts (**1** & **2**) as shown.

2b) Now place the AquaLift Stand Upright **3** in the slot of AquaLift Stand Base assembly (**1** & **2**) and lay the entire assembly as the long plate facing up. Now adjust the upright in the base channel and line up the holes with your measurement from **1a) without going over**. You will need to repeat this step until you have your AquaLift Base/Stand assemblies comprising of parts (**1**, **2** & **3**). Once aligned, secure the AquaLift Stand Upright **3** with standing base (**1** & **2**) with four 1/4" Button Socket Cap Bolts **5** and four Nylon Insert Locknuts **6**. You will need to repeat this entire Step **2b)** one more time so that you have two completed AquaLift Base/Stand assemblies comprising of parts (**1**, **2** & **3**).

Note: Both of your AquaLift Swim Spa Cover Lifter Lower Assemblies should be of the same height.

2c) The height that you will be mounting the AquaLift Stand Base Bracket **4** that holds your AquaLift Lifter Bracket and assembly is just below the upper edge of the AquaLift Stand Upright **3**. Make sure that the bracket is facing the opposite way that the AquaLift Base/Stand assemblies (**1**, **2** & **3**) is facing (the large flat area of the floor plate as shown).

TIP: If you are installing the AquaLift Swim Spa Cover Lifter without a second person, you can use a piece of tape to hold the AquaLift Stand Base Bracket **4 in place.**

2d) Slide the AquaLift Stand Base Bracket **4** over the top of the upright & secure with eight #10 5/8 Pan Phillip Tek Screws **7** below the top of the upright. As shown & place eight #10 Black Plastic Cover Caps **8** on the screw heads. You will need to repeat this entire step **2d)** one more time so that you have two complete fully assembled AquaLift Base/Stand assemblies comprising of parts (**1**, **2**, **3** & **4**).

You have completed Stage One and now have two complete AquaLift Base/Stand assemblies.

PLEASE NOTE: When your AquaLift Base/Stand assemblies are completed brackets position should be at the same height.

Step Three: Calculations for positioning AquaLift Base/Stand Assembly on Swim Spa & establishing the Pivot Point.

Now it's time to determine the position of both AquaLift Base/Stand assemblies.

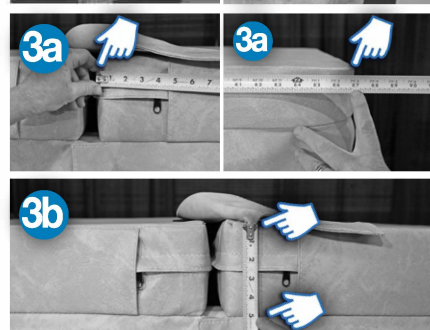
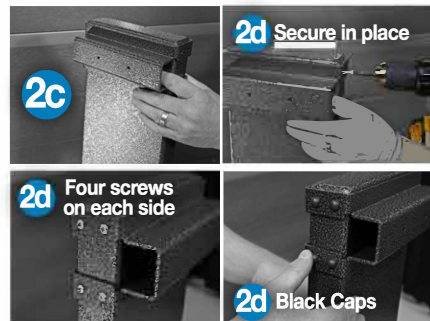
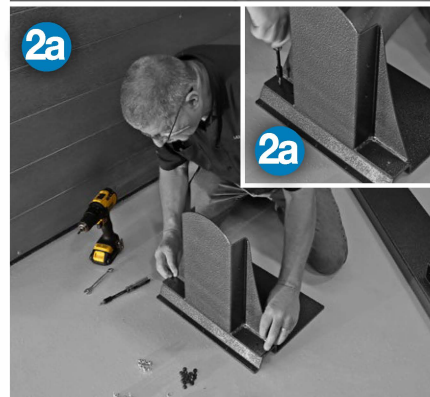
3a) Start by measuring the length one of your spa covers (as shown).

Your Measurement is _____.



3b) Then measure the cover (thickness) at fold, this is the middle of the one cover (Do not include the Cover flap in your measurement as shown).

Your Measurement is _____.



Continued on the Next Page...

3c) Then take your measurement from 3a) _____, **divide that by four (4)** which equals _____, **then subtract your cover thickness measurement 3b)** _____ which then equals _____, **then subtract an addition 1 (Inch)** from your calculation which equals _____.

Your Final Measurement is _____ . (This is your "Pivot Point")

Now using a straight edge (you can use the Centre Poles flat surface) from the back of the Swim Spa and measure out the (pivot point) distance, using Painter's tape and a pencil indicate (mark) that distance measured along the acrylic lip of the swim spa (as shown).

Repeat this step on the opposite side.

This measurement you indicated on your swim spa is THE PIVOT POINT.



Step Four: Install your AquaLift Base/Stand assemblies (1, 2, 3, & 4) on your swim spa.

4a) Slide your AquaLift Base/Stand assembly (1, 2, 3, & 4) underneath the swim spa 5 inches forward (toward's the Centre of the swim spa) from The Pivot Point you marked with painters tape on the acrylic lip of the swim spa.

Repeat this step for the other side (opposite side).

PLEASE NOTE: In order to lift the corner of your swim spa to install the AquaLift Base/Stand assembly (1, 2, 3, & 4) underneath you will need to lift the swim spa 1/4" inch or so. You can most likely use a flat pry bar. Slip it under one corner to lift the spa just enough to slide the base plate under. Repeat this process on the other side.

TIP: To install this system, we recommend having a second person to assist and the swim spa must be empty.



Stage Two:

Step Five: Preparing & Installing AquaLift Upper Lifter Assembly Bracket

5a) Install the Ball Studs (28) at the end of AquaLift Bracket (9) look for the two pre-drilled holes) using a 1/2" socket & 1/2" wrench secure each ball stud (28) with the Nylon Insert Locknuts (29). Then insert the Square Cap (26) at the other end of the AquaLift Bracket.

5b) Now slide the AquaLift Bracket (9) into your AquaLift Stand Bracket (4) and line up the "Pivot Point" to the top hole on the AquaLift Bracket (9) as shown.

PLEASE NOTE: Double check to ensure that the top hole lines up with the marking of pivot point on swim spa.

5c) Secure the AquaLift Bracket (9) on the AquaLift Stand Base Bracket (4) using 2 X #10 x 5/8 Pan Phillip Tek Screws (7).

Repeat this entire step of assembly one more time till you have two AquaLift Stands opposite one another with the AquaLift Upper Lifter Assembly Bracket installed and the Pivot Point Lined up as described above.

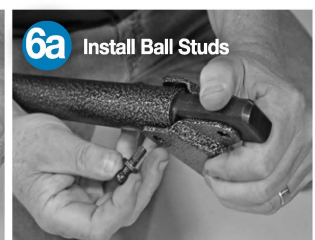
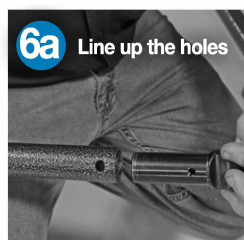


Step Six: Pivot ARM Assembly

6a) Slide the Pivot Support Arm Insert (14) into the Pivot Arm (Round) (12) and line up the holes. Now slip on the ORI Stopper (10) over the Pivot Support Arm Insert (14) so that the narrow gap in the bracket fits over the narrow flat sides of the Pivot Support Arm Insert (14) (as shown) and the holes that appear in the wider end of the bracket line up with the holes in the end of the Pivot Arm (Round) (12) and the ORI Stopper (10). Now install all four Ball Studs (28) and hand tighten.

PLEASE NOTE: On what side the three pre-drilled holes are facing on Pivot Arm (12). Right or Left.

Repeat this step for the other side, making sure the pre-drill three holes on the Pivot Arm (12) are facing the opposite way and install Ball Studs (28), hand tighten.



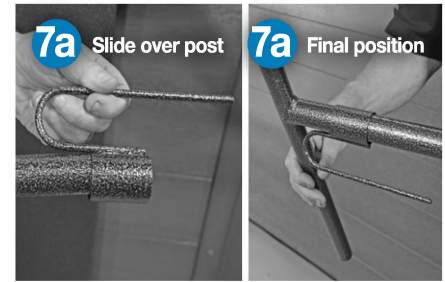
Continued on the Next Page...

Step Seven: Assembling Side Support ARM

7a) Slide the Cover Hook **15** on the long end the Side Support Arm **11**. Repeat this on the other Side Support Arm **11**.

NOTE: To determine left and right-side Support Arms **11**, lay the long end of the arm across the fold of cover as the flat surface facing back of the swim spa.

7b) Lay the Centre Pole **16** along the fold and slide each of the Side Support Arms **11** into the Centre Pole **16** at the same time be sure to slide the Cover Hook's **15** hook post under the seam of cover as shown.



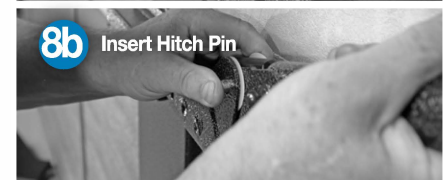
Step Eight: Assembly of Pivot Arm to Side Support Arm and AquaLift Bracket

8a) Lift the Side Support Arm **11** toward the back of the swim spa and slide the Pivot Arm **12** Assembly into the Side Support Arm **11** being sure that ORI Stopper **10** is facing upward, and the three pre-drilled holes in the Pivot Arm **12** are facing out.

8b) Now attach the Pivot Arm **12** to the AquaLift Brackets **9** using Nylon Washers **30**, Clevis Pin **24** and Hitch Pin **25** as shown in image.

8c) Now line up the Centre Pole **16** side support assembly one inch back from the fold line and secure the Pivot Arm **12** to the Side Support Arm **11** using three 5/8 Zinc Pan Phillip Self Tapping Screws **22** and three #10 Dome Black Caps **23**.

8d) Slide the Centre Pole **16** in the Centre of the cover and align the five holes on each side with the Side Support Arm **11** holes to secure with 5/8" Button Socket Cap Screws **31**.



Step Nine: Final Set-up Install the Gas Shocks **18**

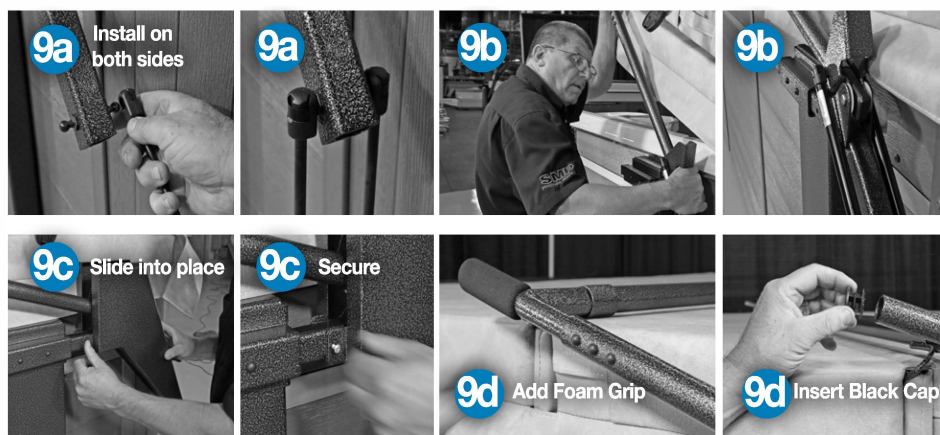
9a) Install the barrel end of the Hydraulic Gas Shock **18** on the Pivot Arm Ball Studs on both the sides of your swim spa (at the same end but on the opposite corner of the swim spa).

9b) Fold the cover back, lifting it to a 45 degree angle approximately, snap the other end of the Gas shock **18** to the AquaLift Bracket Ball Stud. Complete this on the opposite the side of your swim spa (at the same end of the swim spa).

9c) Slide the AquaLift Cover **13** on to the AquaLift Bracket and secure with 10/24 x 2 Pan Quadrex Machine Screw **20** and Nylon Insert Locknut **21** on both the side. Complete this on opposite the side of your swim spa as well (at the same end of the swim spa).

9d) Next install the Foam Grip **17** onto the Side Support Arm **11** and insert the Large Round Black Plastic Caps **27** into the upper end of the Side Support Arm **11**. It is the handle you will use to lift your cover.

Tip: Use a Small Flat Head Screwdriver to lift off the Plastic Black Screw Caps **8**, **23**, **26**, & **27** if the occasion ever arises that requires their removal.



You have now installed one end of your AquaLift Swim Spa Cover Lifter.

Remember... to always make sure the the cover is completely unlocked from the swim spa in order to fold back your cover before using the Cover Lifter to lift the cover into its final resting place - this ensures a longer life for your cover and Cover Lifter, extending your enjoyment of your swim spa.

Ultralift AquaLift

Swim Spa Cover Lifter Warranty



THE WARRANTY:

SMP Specialty Metal Products Inc. warrants to you (the original purchaser) for the stated warranty term of LIFETIME from the original date of purchase, to be free from defects in material and workmanship.

Ultralift Cover Lifters will be free from defects in materials or workmanship that would cause the lifter to be inoperable in normal working conditions. Any claim made within these terms for the lifetime of the product from the date of purchase will be repaired or replaced at the option of the Manufacturer.

This is a 100% Non-Prorated Warranty on all parts for the lifetime of the product. Only parts excluded from the warranty are the gas springs which include a 100% One Year Warranty.

EXCLUSIONS TO WARRANTY

- Lifter has been subjected to alteration, misuse or repairs by anyone other than an authorized representative of the Manufacturer, unless written approval is provided
- Damage caused by improper installation or during transportation from the seller to the purchaser
- Any damage resulting from any misuse, abuse, negligence, accident or alteration, environmental, or use during high winds.

The warranty covers the operational use of the lifter but does not cover scratches, abrasions, rusting or any defects to the finish of the material caused by or resulting from the exposure to the environmental factors; i.e. sun, rain, chemicals or any defects resulting from normal fading or minor deterioration.

The warranty does not cover damage resulting from abuse or accidents, including but not limited to the following damage:

- Use of abrasive or unapproved cleaners that could cause surface damage
- Subjection to solvents or other chemicals which could deteriorate painted surfaces
- Use for any other purpose than as a Spa or Hot tub cover lifter

MAKING A CLAIM:

To make a warranty claim; in the event of a defect covered by this warranty for Ultralift, contact the original retail seller and provide original purchase receipt, any photo(s) clearly showing the defect(s) and an explanation. **NO RETURNS OF MERCHANDISE WILL BE ACCEPTED UNTIL A "RETURN AUTHORIZATION NUMBER" HAS BEEN ISSUED.** The lifter will be repaired or replaced at the discretion of the Manufacturer. If necessary, the purchaser is responsible to ship any said parts back to the manufacturer. The warranty includes all Labor costs performed at the manufacturer's facility but not labor in the field. SMP will cover the cost(s) to repair and/or replacement of the items back to the retailer or seller.

FREIGHT DAMAGE:

Any materials damaged in freight will be replaced by SMP Specialty Metal Products provided the purchaser files the appropriate claims form with the carrier, and submits copies to the manufacturer within five (5) business days of receiving the damaged merchandise. All claims should also be reported to the seller.

Consequential Damages:

SMP Specialty Metal Products Inc. will not be liable for any loss, expense, or damage other than to Ultralift, that may result from a defect in materials or workmanship. This warranty does not cover incidental damages including damage to property or injury arising from the use or inability to use this product. Manufacturer or Seller shall in no event be liable for any amount in excess of the original purchased amount. (Some Provinces / States do not allow the exclusion or limitation of incidental or consequential damages, so the above mentioned limitation may not apply to you).

It is important that you report to the Retailer from whom you purchased Ultralift, any defects as soon as they are detected.

If it is impractical to report any defects to the Retailer, **CONTACT SMP Specialty Metal Products Inc. 326 Watline Avenue, Mississauga, Ontario Canada, L4Z 1X2; Phone: 1-800-597-1343, Email: info@theultralift.com**

CAN Patent No. 2,432,833

Patents Pending

Made in Canada

US Patent No. 7290297B