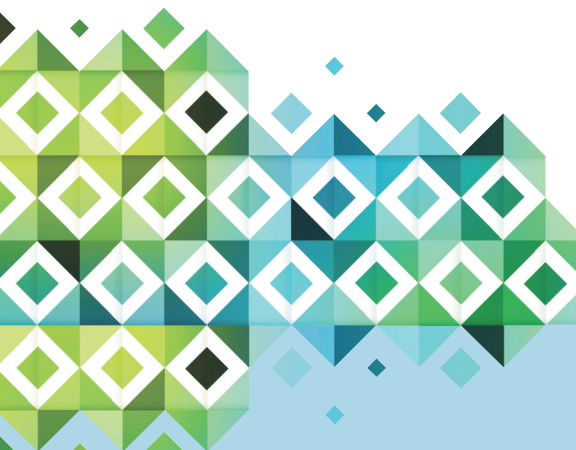




Mineral Harmony™

REFRESH

Non-Chlorine Shock Oxidizer



ACTIVE INGREDIENT:

Potassium Monopersulfate	32.18%
Inert Ingredients	67.82%
TOTAL	100.00%

*Equivalent to 3.26% active oxygen

DANGER

KEEP OUT OF REACH OF CHILDREN

CORROSIVE TO EYES, SKIN AND MUCOUS MEMBRANES. MAY BE HARMFUL IF SWALLOWED. Avoid contact with eyes, skin and clothing. Wash thoroughly with soap and water after handling. Avoid breathing dust.

See side panel for additional precautionary statements and first aid.

Net Weight: 1 lb.

FIRST AID

IF IN EYES: Hold eye open and rinse slowly and gently with water for 15-20 minutes. Remove contact lenses, if present after the first 5 minutes, then continue rinsing eye. Call a poison control center or doctor for treatment advice.

IF ON SKIN OR CLOTHING: Take off contaminated clothing. Rinse skin immediately with plenty of water for 15-20 minutes. Call a poison control center or doctor for treatment advice.

IF INHALED: Move person to fresh air. If person is not breathing, call 911 or an ambulance, then give artificial respiration, preferably by mouth-to-mouth, if possible. Call a poison control center or doctor for further treatment advice. Have the product container or label with you when calling a poison control center or doctor, or going for treatment.

IF SWALLOWED: Call poison control center or doctor immediately for treatment advice. Have person sip a glass of water if able to swallow. Do not induce vomiting unless told to do so by the poison control center or doctor. Do not give anything by mouth to an unconscious person.

NOTE TO PHYSICIAN: Probable mucosal damage may contraindicate the use of gastric lavage.

Mineral treated spas require the regular testing and balancing of the water for the minerals to perform properly. Mineral Harmony was developed exclusively for use with mineral treated spa water.

Mineral Harmony REFRESH is a powerful oxygen-based oxidizer. When used regularly, this product will help eliminate contaminants introduced by bathers and environmental factors like rain and wind. This product will not raise chlorine levels or produce combined chlorine. This product restores sparkle and clarity to spa water. It will not increase calcium hardness or stabilizer levels. This product contains no chlorine or other disinfectants.

DIRECTIONS FOR USE:

DO NOT PREMIX WITH WATER. ALWAYS ADD DIRECTLY TO THE SPA.

This product is not a sanitizer or algacide. For routine disinfection of spa water or algae control, use an EPA-registered product according to its label instructions. For routine control of microorganisms in spa or hot-tub water, use an EPA-registered Mineral Sanitizer according to its label instructions.

READ ALL PRECAUTIONS BEFORE USE

Wear goggles and gloves when handling. Use only in residential spas. Add only when no bathers are present.

DIRECTIONS FOR SPAS AND HOT TUBS:

This product contains no sanitizer and should be used for oxidizer treatment only. Regular use of this product will remove most of the contaminants that accumulate in spa water.

WHEN TO ADD MINERAL HARMONY REFRESH TO YOUR SPA:

Add this product to spa water after every use, or according to the instructions on your Mineral Sanitizing System. **DO NOT PREMIX WITH WATER. ALWAYS ADD DIRECTLY TO THE SPA.**

HOW TO USE MINERAL HARMONY REFRESH TO KEEP SPA WATER SPARKLING CLEAR:

1. Add 2 ounces (4 tablespoons) of this product per 300 gallons of water as directed on your Mineral Sanitizing system. **NOTE:** Apply the required amount of this product evenly across the spa water with the pump running. Add the full amount at one time using a clean and dry plastic scoop.
2. Run the pump for at least 30 minutes.
3. Turn the jets on and off once or twice after adding this product to improve the treatment.

PHYSICAL OR CHEMICAL HAZARDS:

STRONG OXIDIZING AGENT.

DO NOT PREMIX WITH WATER. ALWAYS ADD DIRECTLY TO THE SPA. Do not mix with other chemicals. Do not add this product to any chemical feeder. Contamination with moisture, organic matter or other chemicals may cause a violent reaction leading to fire or liberation of hazardous gases. In case of contamination or decomposition, do not reseal container. If possible, isolate container in well-ventilated area. Flood with large amounts of water.

STORAGE AND HANDLING:

Keep dry and in original container. Store in a cool, dry, well-ventilated place. Do not store with chlorine, bromine, or liquid acids. Keep container tightly closed when not in use.

PACKAGE DISPOSAL: Triple rinse empty container. Do not reuse container. Discard in trash.

NOTE: Buyer assumes

all responsibility for safety and use not in accordance with directions.

2765

149-012017S12
998-MH0300G01 Rev. 0418

Distributed by ESSENTIALS
5070 Wallace Drive,
Cumming, GA 30041
Essentials-SpaSupplies.com

