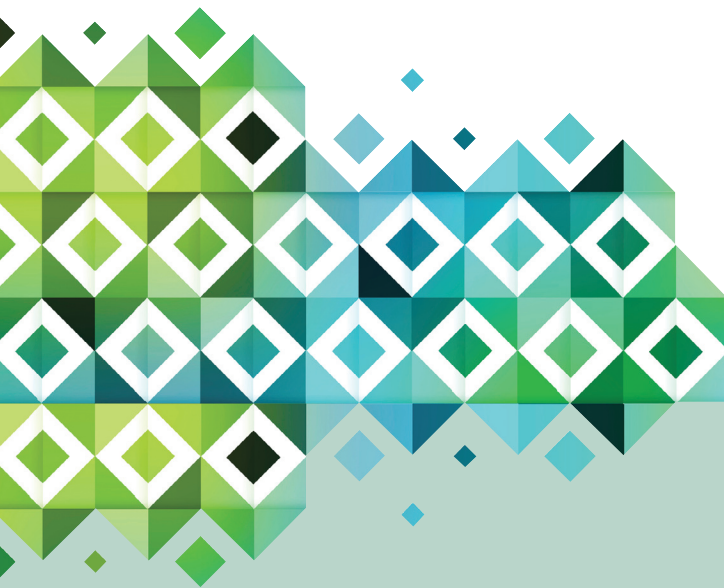




SWIM+SPA ALK UP

Increases Alkalinity while Maintaining pH



ACTIVE INGREDIENT:
Sodium Hydrogen Carbonate.....100%
C.A.S. No.144-55-8

CAUTION

KEEP OUT OF REACH OF CHILDREN

See side panel for additional
precautionary statements.

Net Weight: 2 lbs.

Mineral treated water requires the regular testing and balancing of the water for the minerals to perform properly. Mineral Harmony was developed exclusively for use with mineral treated Swim+Spa water.

Swim+Spa ALK UP raises the total alkalinity of your water while eliminating pH bounce. When the pH of your water fluctuates back and forth, it is usually the result of low total alkalinity. Proper alkalinity will help maintain a proper pH.

DIRECTIONS FOR USE:

1. Test water alkalinity. The ideal level is 80-150 ppm.
2. If the total alkalinity level is below 80 ppm, add **Swim+Spa ALK UP** per the following chart:

Gallons of Water	Increase in PPM Required		
	10 ppm	20 ppm	30 ppm
250 gallons	1-1/4 tbs.	2-1/2 tbs.	1/4 cup
500 gallons	2-1/2 tbs.	5 tbs.	1/2 cup
1000 gallons	5 tbs.	10 tbs.	1 cup

3. Wait several hours for product to fully distribute. Test and repeat if additional adjustment is needed.

FAST ACTING - 100% SOLUBLE

ITEM 2778

149-016A20S12
998-MH1900G01
Rev No. 0525

Distributed by ESSENTIALS
5070 Wallace Drive • Cumming, GA 30041
Essentials-SpaSupplies.com

Mineral Harmony® is a registered trademark of Spires
Management, Inc. dba ESSENTIALS. All rights reserved.

PRECAUTIONARY STATEMENTS:

CAUTION: Contains Sodium Bicarbonate. Causes eye irritation. Avoid contact with eyes, skin and clothing. Do not ingest this product. Avoid breathing dust. Wash hands thoroughly after handling.

PHYSICAL AND CHEMICAL HAZARDS: Do not mix with any other chemicals. Dangerous reactions may occur.

FIRST AID:

IF SWALLOWED: Call a poison control center or doctor immediately. If conscious, give 2-4 glasses of water to dilute. DO NOT induce vomiting unless told to do so by a poison control center or doctor.

IF INHALED: Remove to fresh air. Dust may cause coughing or sneezing. Seek medical attention for breathing difficulty.

EYE CONTACT: Hold eye open and rinse gently with cool water for 15-20 minutes. Remove contact lenses, if present, after the first 5 minutes, then continue rinsing eye. Call a poison control center or doctor immediately for treatment advice.

SKIN CONTACT: Wash with soap and water.

STORAGE AND DISPOSAL:

STORAGE: Store in a cool, dry area. Keep product in original tightly closed container. Store away from heat, children, and pets.

DISPOSAL: Do not reuse container. Place empty container in trash or recycle where available.

KEEP OUT OF REACH OF CHILDREN

Made in the USA

